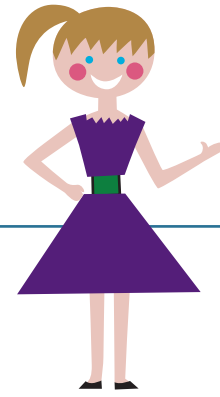




EZ Quilting item 882670179A • Easy Angle 4.5"
EZ Quilting item 8823759A • Easy Angle 6.5"
EZ Quilting item 882670147A • Easy Angle 10.5"



Cutting Directions Easy Angle

Illustrations show the 4 1/2" Easy Angle. There are 3 versions of the Easy Angle.



Fig. 1

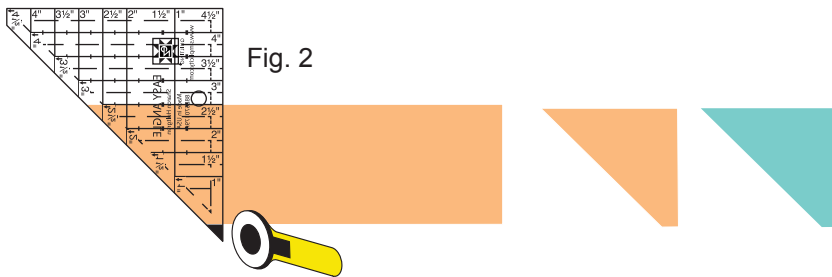


Fig. 2



Fig. 3

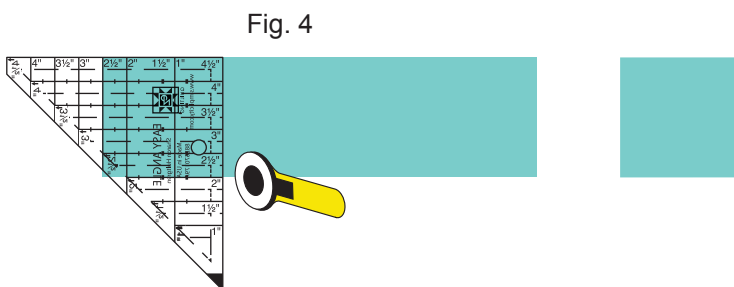


Fig. 4

1. Cut strips of fabric 1/2" wider than the finished size of the triangle squares. (Example: For 2" finished triangle-squares, cut 2 1/2" strips). Cuts half square triangles and squares without fabric waste, and has a built in 1/4" seam allowance.

2. Place two strips that will make up the triangle squares right sides together. Trim off selvages.

3. Line up the bottom edge of Easy Angle on the bottom edge of the fabric strips. Slide Easy Angle to the right until the strip size reads in the "window" (example 2 1/2"). Cut along the diagonal edge with rotary cutter. Fig. 1.

4. For the next cut, flip the tool up and line up the top edge of the fabric with the strip size on the tool (2 1/2"). The black tip extends below the bottom of the strip. Cut on the right edge. Fig. 2.

5. Continue cutting triangles from strips, following steps 3 and 4.

6. The triangle squares can then be sewn together. Trim "dog-ears" (the little triangles that stick out after sewing together). Fig. 3.

Cutting Squares with Easy Angle

7. Use the corner of the tool to cut squares. When the black tip is pointing down for the second cut, the numbers across the top edge of the tool will provide a perfect square. Fig. 4.